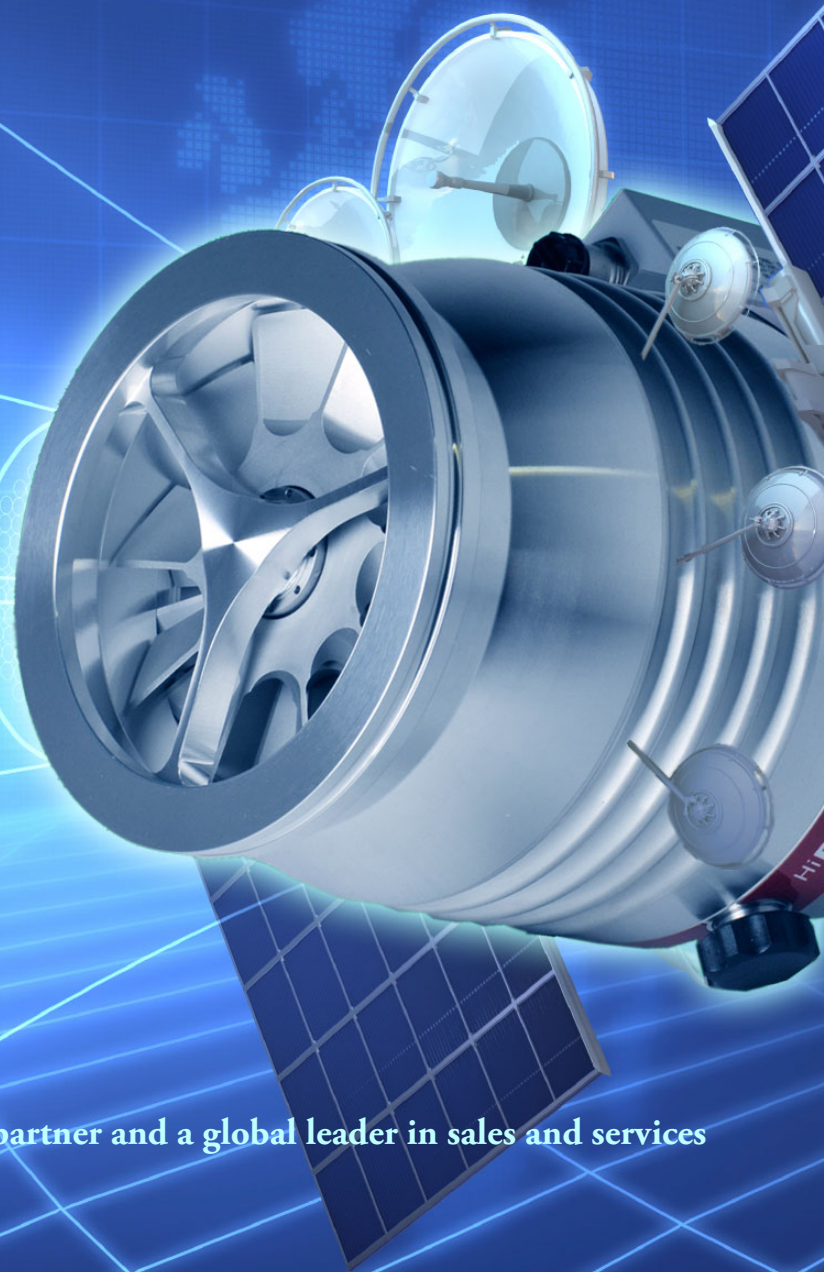


1.855.882.2886



AJVS

www.ajvs.com



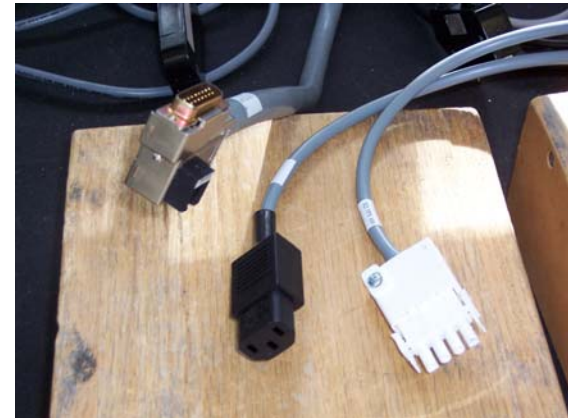
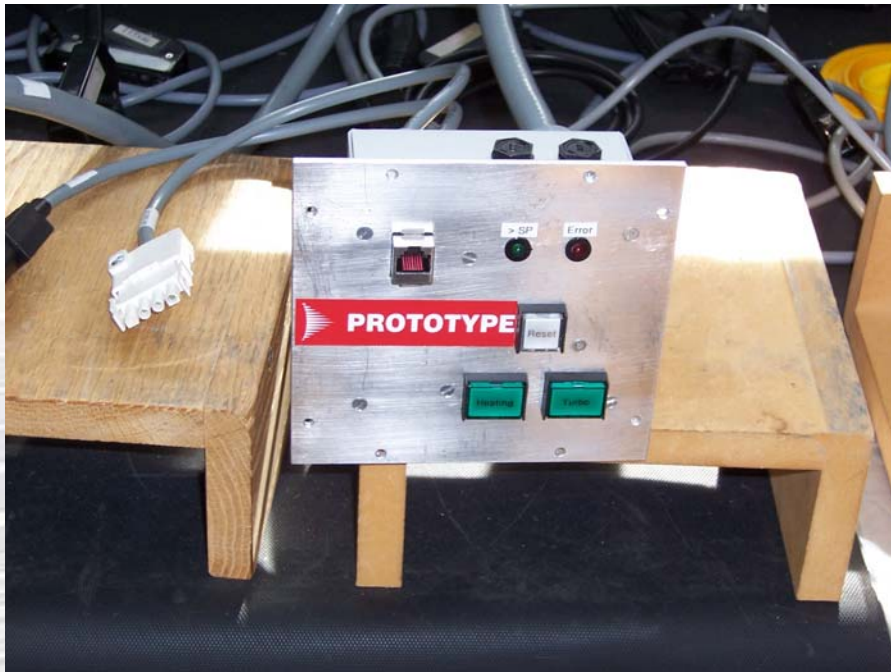
A&J Vacuum Services is your highly qualified partner and a global leader in sales and services of your High Vacuum equipment.

A&J Vacuum Services, Inc.
790 Bloomfield Ave., Suite B3
Clifton, NJ 07012, USA
Tel: 973-249-0854
Fax: 973-249-0855
Website: www.ajvs.com

Customer Service: info@ajvs.com
Sales Inquiries: sales@ajvs.com
Service Inquiries: service@ajvs.com
Technical Assistance: tech@ajvs.com
Order Status: tracking@ajvs.com

HP Upgrade Boxes- “A Revision”

Front Panel Interface with Power, Heating and Reset button as well as green “up to speed” LED and an RS485 jack for optional DCU interface box



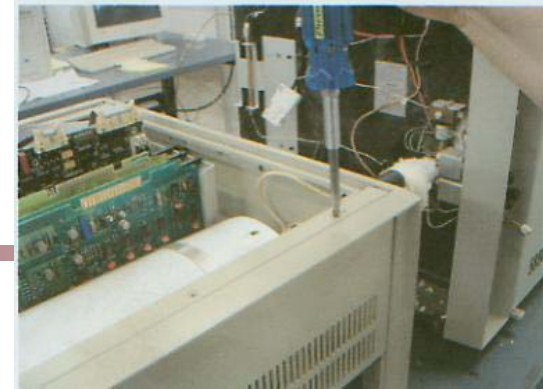
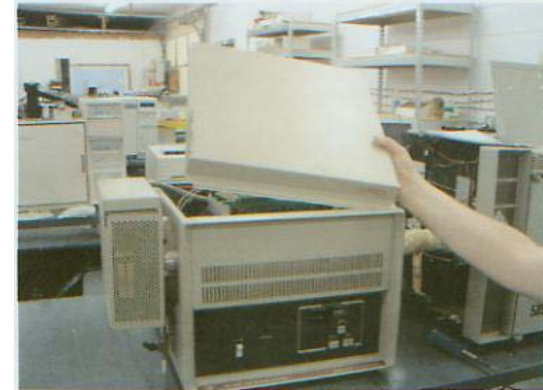
Connectors for turbo, AC power in, and DC power out (left to right)



Rear panel connectors and cables including interface to the HP system

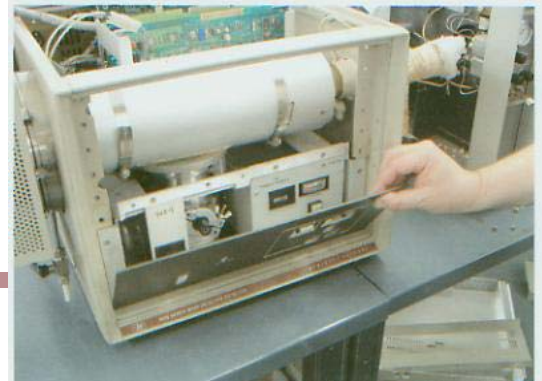
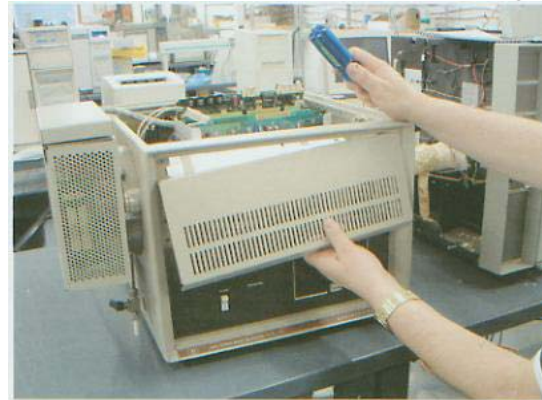
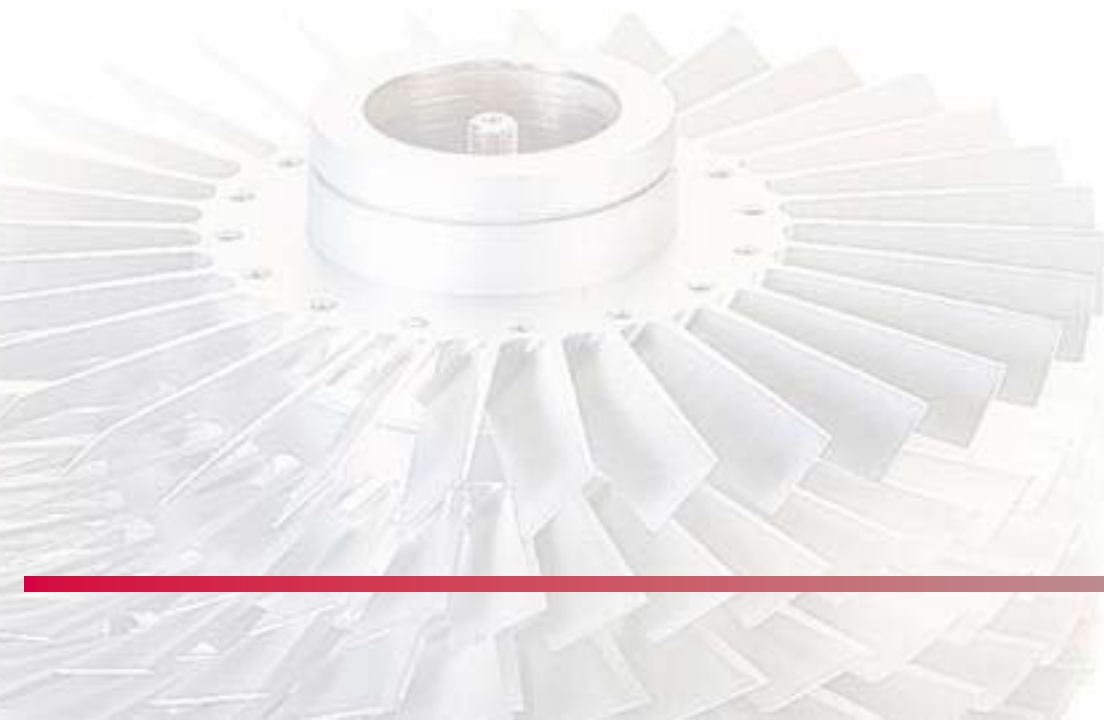
HP 5970 Upgrade Pictures

- Initial breakdown of HP 5970
- Removing the top cover and starting to take off the front panel



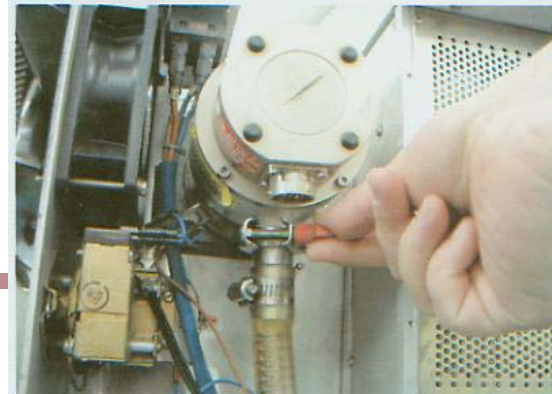
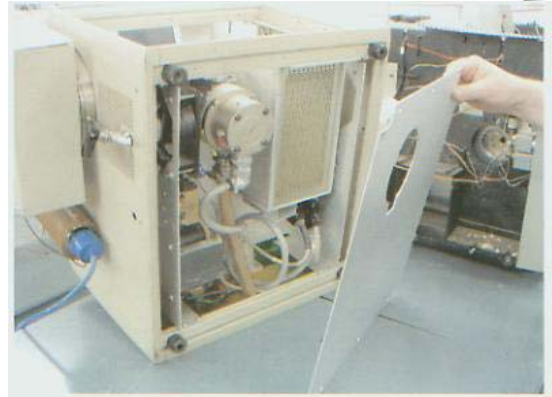
HP 5970 upgrade pictures

- Removing the rest of the front panel.



HP 5970 Upgrade Pictures

- Removing the bottom panel
- Removing turbo control cable and foreline connection.



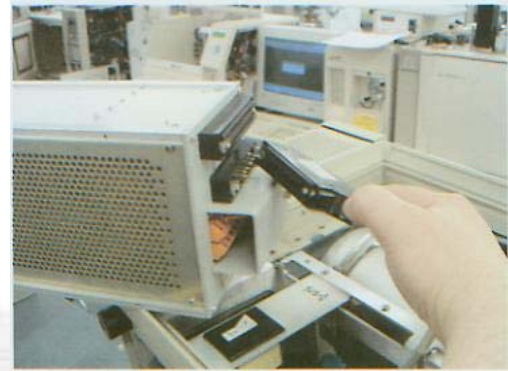
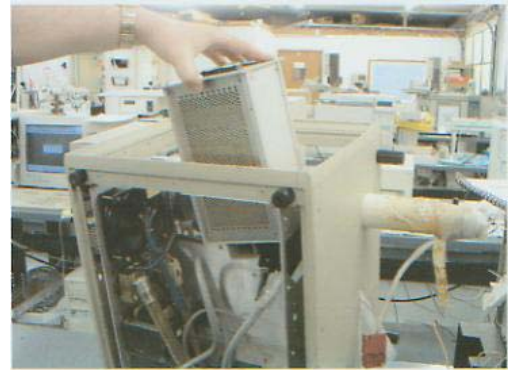
HP 5970 Upgrade Pictures

- Removing turbo from system.
- Removing front panel screws from TCP040



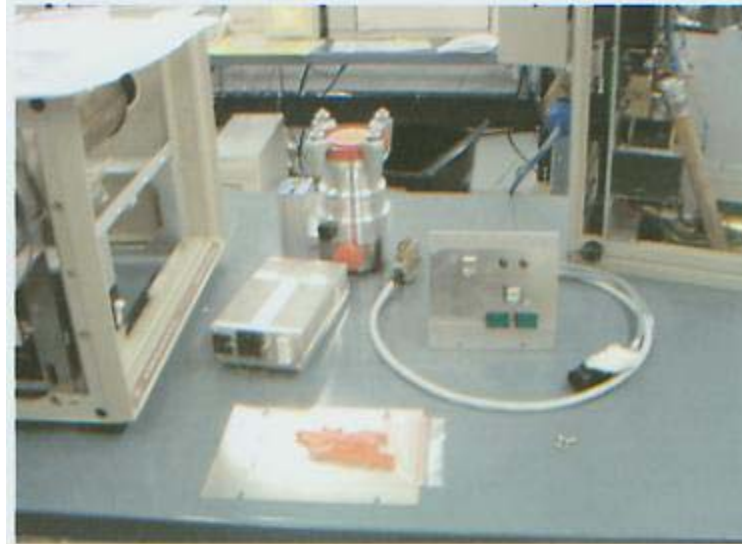
HP 5970 Upgrade Pictures

- **Completing removal of the TCP040**
- **Removing the system cable from the TCP040**
- **All items removed from the system.**



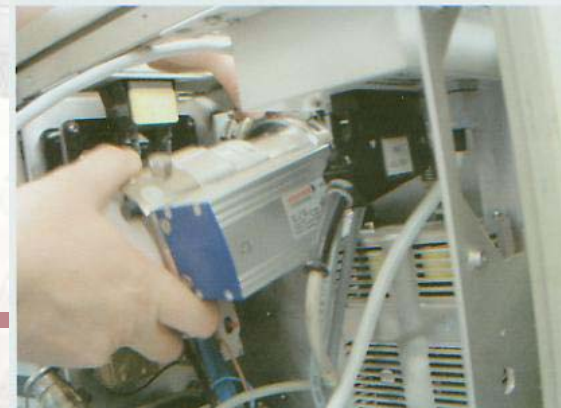
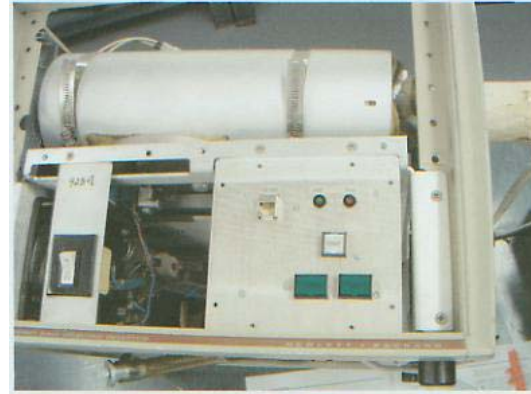
HP 5970 Upgrade Pictures

- Upgrade Kit parts
- Connect system cable to upgrade kit



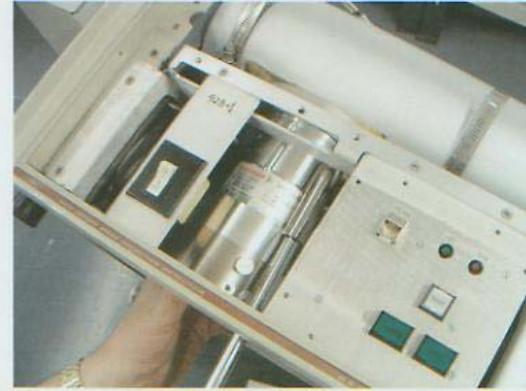
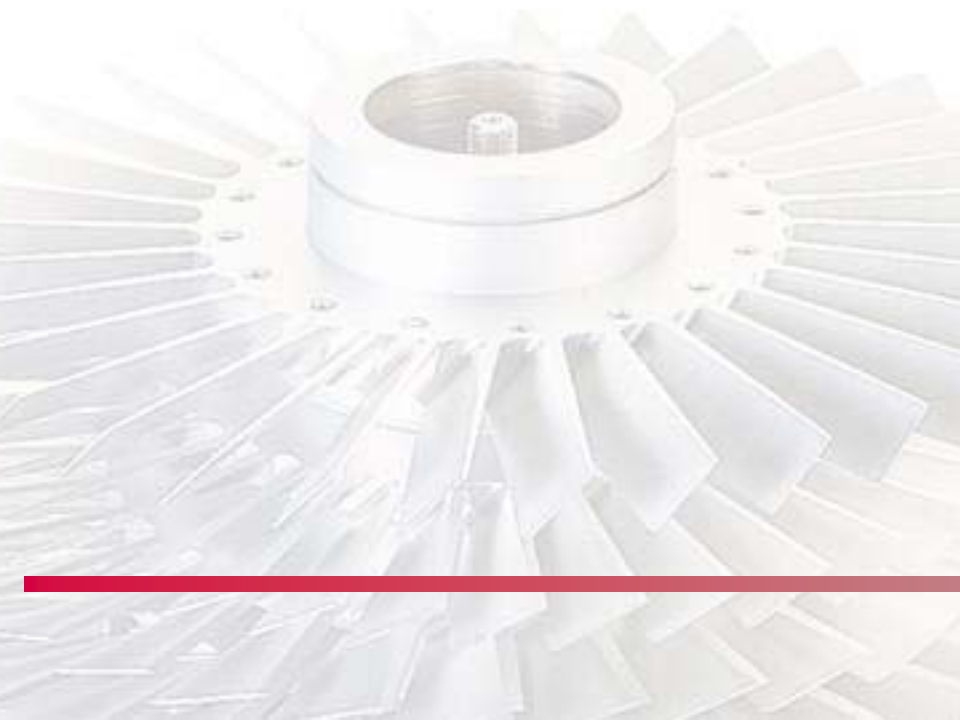
HP 5970 Upgrade Pictures

- **Mount interface box**
- **Connect D-sub to turbo**
- **Place TPS in system and connect AC input and DC output cables (not shown)**
- **Install turbo into system**



HP 5970 Upgrade Pictures

- Complete install of turbo in system.

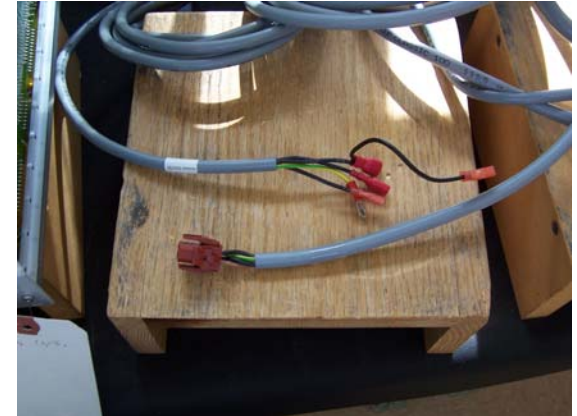


HP Upgrade Boxes – “B revision”

TCP120 “brick” style interface box



Connections to heater switch and mother board



Connections to turbo, dc power out and ac power in